

CommitteeName

Date: **MeetingDate**

Time: **MeetingTime**

Venue **MeetingLocation**

Members: **Councillors:ChairExpectedShortRolesList,**
MembersExpectedShortRolesList

Conservation Advisory Group Representative

Contact: **CommitteeOfficerName**
CommitteeOfficerTitle
CommitteeTel
CommitteeEmail

Agendas and minutes are published on the council's website www.brighton-hove.gov.uk.
Agendas are available to view five working days prior to the meeting date.

Electronic agendas can also be accessed through our meetings app available through
ModernGov: [iOS/Windows/Android](#)

This agenda and all accompanying reports are printed on recycled paper

AGENDA

PART ONE

Page

The City Council actively welcomes members of the public and the press to attend its meetings and holds as many of its meetings as possible in public. Provision is also made on the agendas for public questions to committees and details of how questions can be raised can be found on the website and/or on agendas for the meetings.

The closing date for receipt of public questions and deputations for the next meeting is 12 noon on the fourth working day before the meeting.

Meeting papers can be provided, on request, in large print, in Braille, on audio tape or on disc, or translated into any other language as requested.

Infra-red hearing aids are available for use during the meeting. If you require any further information or assistance, please contact the receptionist on arrival.

FURTHER INFORMATION

For further details and general enquiries about this meeting contact CommitteeOfficerName, (CommitteeTel, email CommitteeEmail) or email democratic.services@brighton-hove.gov.uk

WEBCASTING NOTICE

This meeting may be filmed for live or subsequent broadcast via the Council's website. At the start of the meeting the Chair will confirm if all or part of the meeting is being filmed. You should be aware that the Council is a Data Controller under the Data Protection Act 1998. Data collected during this web cast will be retained in accordance with the Council's published policy.

Therefore, by entering the meeting room and using the seats in the chamber you are deemed to be consenting to being filmed and to the possible use of those images and sound recordings for the purpose of web casting and/or Member training. If members of the public do not wish to have their image captured, they should sit in the public gallery area.

ACCESS NOTICE

The Public Gallery is situated on the first floor of the Town Hall and is limited in size but does have 2 spaces designated for wheelchair users. The lift cannot be used in an emergency. Evac Chairs are available for self-transfer and you are requested to inform Reception prior to going up to the Public Gallery. **For your own safety please do not go beyond the Ground Floor if you are unable to use the stairs.**

Please inform staff on Reception of this affects you so that you can be directed to the Council Chamber where you can watch the meeting or if you need to take part in the proceedings e.g. because you have submitted a public question.

FIRE / EMERGENCY EVACUATION PROCEDURE

If the fire alarm sounds continuously, or if you are instructed to do so, you must leave the building by the nearest available exit. You will be directed to the nearest exit by council staff. It is vital that you follow their instructions:

- You should proceed calmly; do not run and do not use the lifts;
- Do not stop to collect personal belongings;
- Once you are outside, please do not wait immediately next to the building, but move some distance away and await further instructions; and
- Do not re-enter the building until told that it is safe to do so.

Date of Publication - Deadline(pubagenda)

72-74 Walsingham Road

BH2021/00921

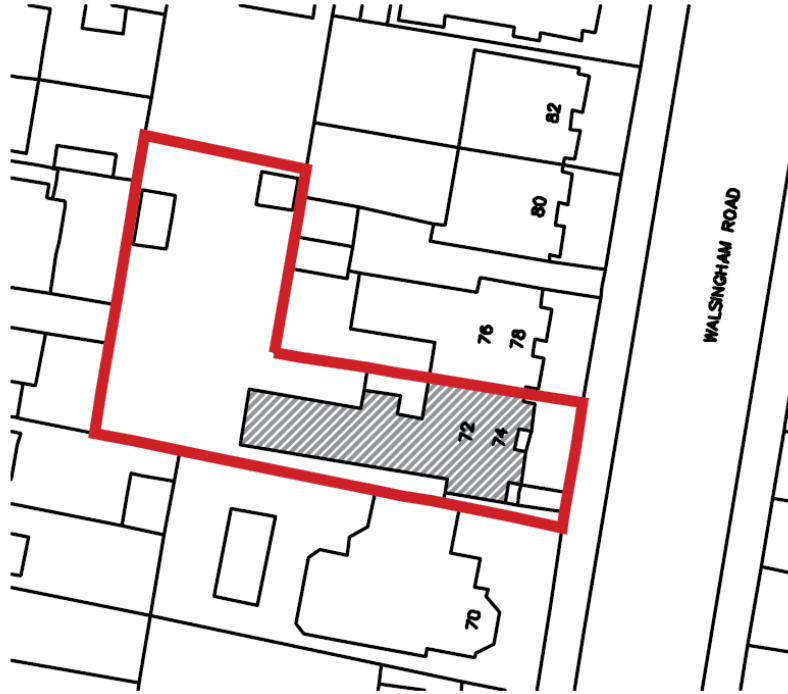


Brighton & Hove
City Council

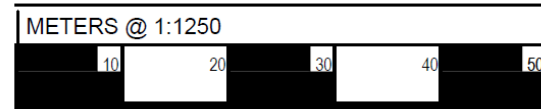
Application Description

- Change of use of garden from nursing home (C2) to form part of residential dwelling (C3). Erection of a single storey ground floor side extension, revised fenestration, extension to rear pitched roof and associated works.

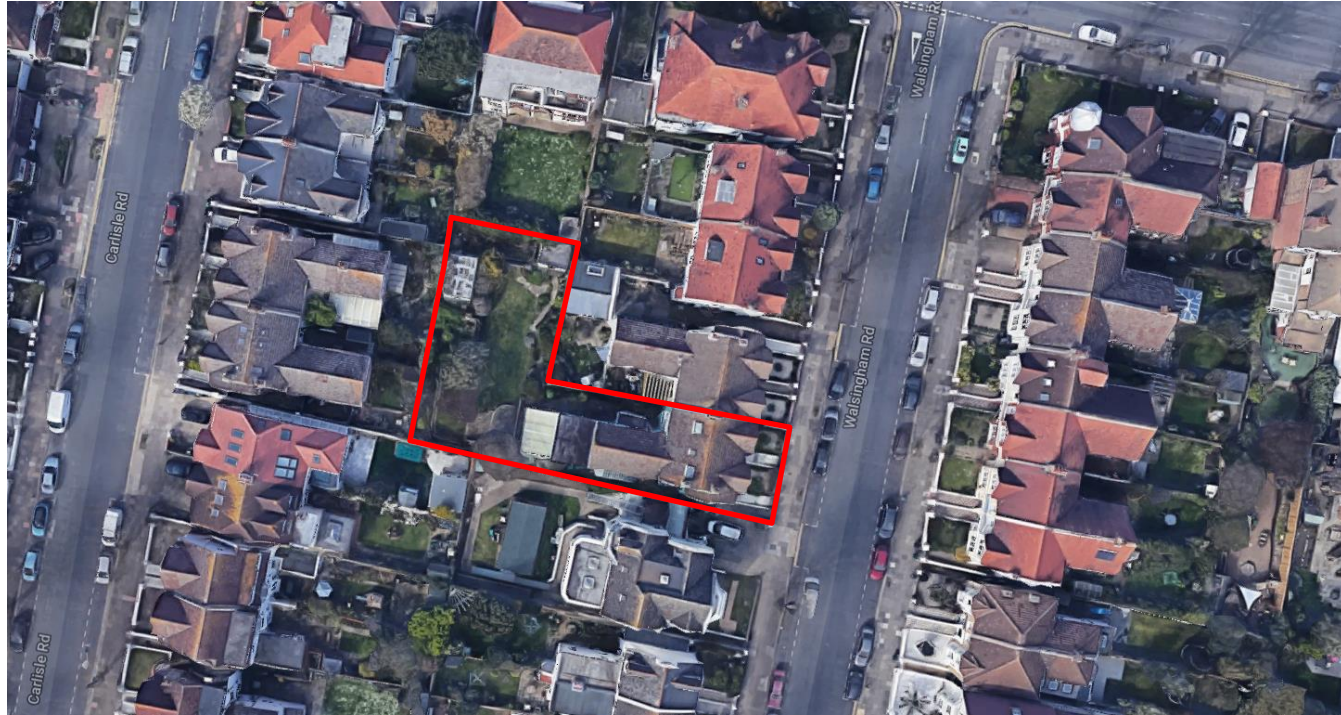
Existing Location Plan



Location Plan
Scale: 1:1250



Aerial photo(s) of site



3D Aerial photo of site



Street photo(s) of site



Other photos of site



Proposed Block Plan



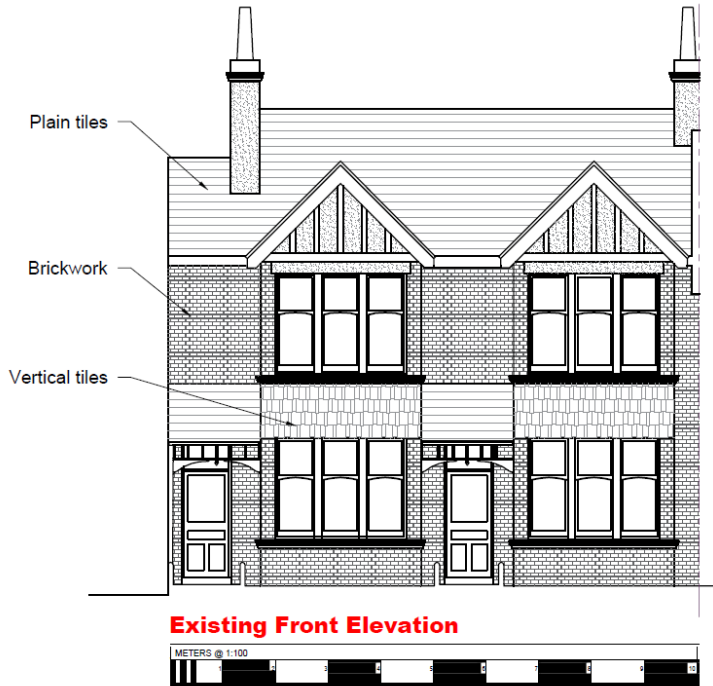
Block Plan
Scale: 1:500



8

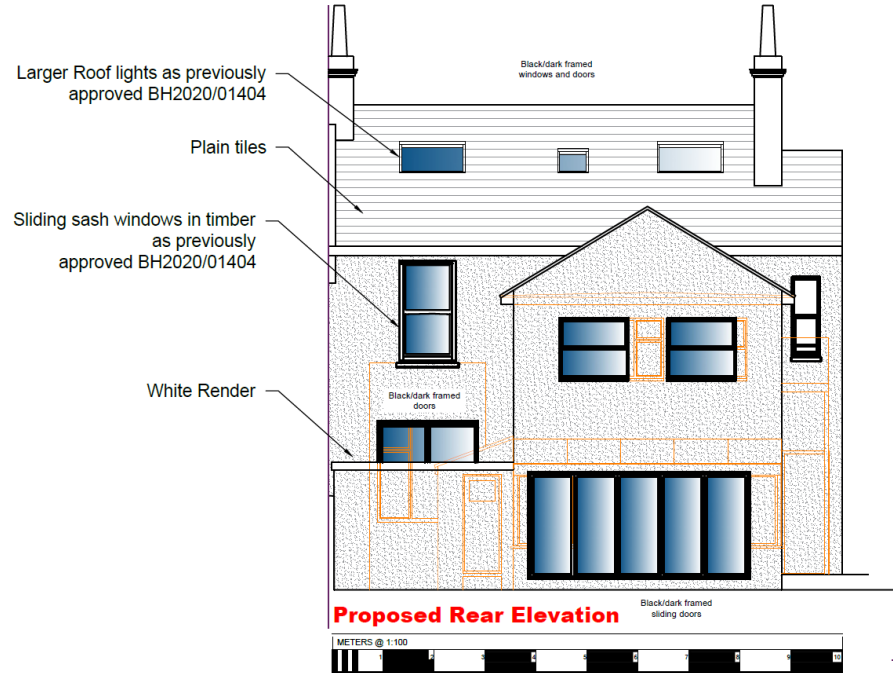
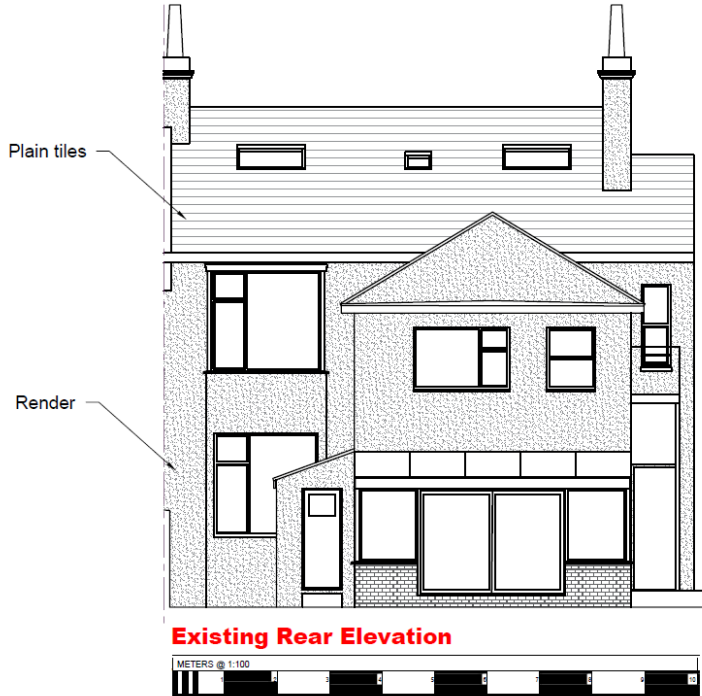
SK1

Existing & Proposed Front Elevation



Existing Rear Elevation

10



Key Considerations in the Application

- Principle of Development
- Design and Appearance
- Impact on Conservation Area
- Impact on Amenity

Conclusion and Planning Balance

- Change of use of garden – no impact
- External alterations amended in line with Heritage and Planning Officer requests, now considered acceptable
- Impact on Amenity acceptable
- Impact on Conservation Area acceptable